

ELEGANT TENSILE

PREMIUM QUALITY TENSILE STRUCTURE



+91 8882088973
+91 9315740299



<http://www.instagram.com/eleganttensile>



elegantensile@gmail.com



<https://eleganttensile.com/>

<https://eleganttensile.com/>

ELEGANT TENSILE

PREMIUM QUALITY TENSILE STRUCTURE



ABOUT US

Welcome to Elegant Tensile, your premier manufacturer and supplier of high-quality Tensile Structures, Outdoor Awnings, Roofing Sheds, Tensile Gazebo, Retractable Tensile Roof, PVC Modular Stadium Tensile Roof, Canopy, Outdoor Shed, and more. Situated in Varanasi, Uttar Pradesh, our company was founded in 2020 and has quickly established itself as a trusted name in the industry. At Elegant Tensile, we take pride in our commitment to excellence and innovation. Our expert team of designers, engineers, and skilled craftsmen work in synergy to deliver cutting-edge, customized solutions that cater to diverse needs and applications. Whether it's creating stylish outdoor awnings for residential spaces or engineering large-scale tensile structures for commercial and public projects, we guarantee the highest standards of quality, durability, and aesthetics. We elegant tensile blessed with expert and highly experience in this industry. Adhering to strict quality control with reasonable price.

OUR PRODUCT

TENSILE GAZEBO

Introducing our tensile gazebo—an elegant and durable solution designed to enhance any outdoor space. Crafted with premium, weather-resistant materials, our gazebos offer long-lasting protection while maintaining a sleek, modern appearance. Perfect for gardens, patios, or commercial areas, our tensile gazebos combine innovative design with functionality, providing a stylish shelter that stands up to the elements. Elevate your outdoor experience with a structure that seamlessly blends aesthetics and performance.



OUR PRODUCT

CAR PARKING TENSILE SHED

A car parking tensile shed is a structure designed to provide shelter and protection to vehicles from various weather conditions such as sun, rain, and hail. These sheds are typically constructed using a tensioned membrane stretched over a supporting framework, which can be made of materials like steel or aluminum. Here are some key features and benefits of car parking tensile sheds:

1. **Weather Protection:** Tensile sheds offer reliable protection from harsh weather elements, helping to preserve the exterior paint and interior components of parked vehicles.
2. **Space Optimization:** Tensile sheds are designed to cover parking spaces efficiently without the need for supporting columns or pillars, maximizing the available parking area.
3. **Quick Installation:** Compared to traditional building structures, tensile sheds can be installed relatively quickly due to their lightweight design and modular construction.
4. **Durability:** High-quality materials such as PVC, PTFE, or ETFE membranes, along with corrosion-resistant steel or aluminum frames, ensure the durability and longevity of tensile sheds.
5. **Enhanced Aesthetics:** Tensile sheds can enhance the visual appeal of parking areas with their sleek and modern design.
6. **Cost-Effective Solution:** Tensile sheds offer a cost-effective solution for providing covered parking spaces compared to traditional building structures.



OUR PRODUCT

SWIMMING POOL TENSILE SHED

A swimming pool tensile shed combines functionality and style, providing a sleek, modern cover for your pool area. Made from high-quality, weather-resistant materials, these sheds offer protection from the elements while enhancing the visual appeal of your outdoor space. The tensile structure is designed to be both lightweight and strong, allowing for large spans without the need for extensive support columns. This creates an open, unobstructed area around the pool, ideal for lounging and entertaining. The shed's design also ensures effective shading and UV protection, keeping the water cooler and reducing maintenance. Easy to install and maintain, a swimming pool tensile shed is a versatile and elegant solution for enhancing your pool area, offering both durability and aesthetic charm.



OUR PRODUCT

WALKWAY TENSILE STRUCTURE

Walkway tensile structures are innovative architectural solutions that combine form and function. These structures use tensioned cables and membranes to create visually striking walkways that are both lightweight and durable. Ideal for outdoor paths, bridges, and pedestrian areas, walkway tensile structures provide an open and airy feel, while effectively withstanding environmental stresses. They offer a modern aesthetic with clean lines and expansive spans, allowing for unobstructed views and minimal supports. Their flexibility and strength make them well-suited for various climates and settings, from urban environments to parks. Additionally, these structures are often more cost-effective and quicker to install compared to traditional building methods, making them a practical choice for enhancing public spaces with style and resilience.



OUR PRODUCT

MARRIAGE HALL TENSILE SHED

A Marriage Hall Tensile Shed is an exceptional choice for wedding venues, merging modern design with practical functionality. Constructed using high-quality tensile materials, these sheds offer a unique blend of strength and elegance, ideal for hosting large-scale events. The tensile structure features a network of cables and fabric stretched over a frame, creating a spacious, column-free environment that enhances the open, airy feel of the space. This design not only maximizes floor area but also provides unobstructed views, adding to the aesthetic appeal of the venue.

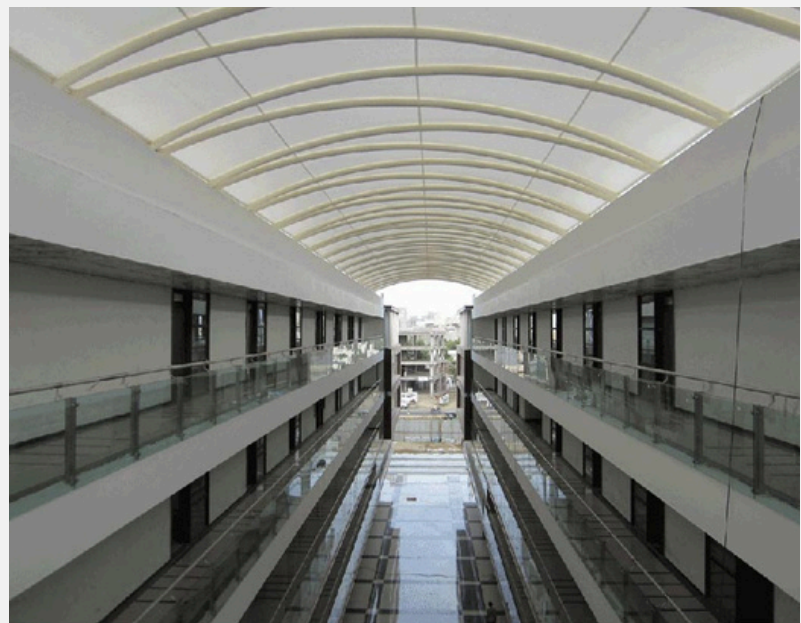
In addition to its visual benefits, the tensile shed is engineered to withstand various weather conditions, ensuring durability and reliability throughout the event. Its customizable features allow for a range of shapes and finishes, allowing it to be tailored to match the wedding's theme and style. Overall, a Marriage Hall Tensile Shed offers a sophisticated, versatile, and resilient solution for creating an unforgettable wedding experience



OUR PRODUCT

SKYWAY TENSILE STRUCTURE

ASkyway Tensile Structures are innovative architectural solutions designed for elevated walkways and bridges. These structures use high-strength cables and flexible membranes to create aesthetically striking and functional overhead pathways. The tensioned fabric or membrane allows for large spans with minimal support, offering unobstructed views and modern design elements. Ideal for connecting buildings, transit hubs, or public spaces, Skyway Tensile Structures provide a lightweight, durable, and cost-effective solution that enhances urban landscapes and promotes efficient movement. Their unique design not only serves practical purposes but also adds a visually dynamic element to the environment, making them a popular choice for contemporary architecture.



OUR PRODUCT

ARCHITECTURAL TENSILE CONICAL

Architectural tensile conical structures are a striking design solution that combines aesthetic elegance with functional performance. These structures use a cone-shaped membrane under tension, creating a visually dynamic and supportive form. The conical shape allows for efficient load distribution, making the structure both durable and stable. This design is often used in large-scale projects like sports venues, exhibition centers, and public pavilions, where the combination of form and function is crucial. The tensile fabric, usually made of high-strength materials, can be customized for various colors and finishes, enhancing the visual impact while maintaining structural integrity. The conical form also allows for large, unobstructed interior spaces, making it ideal for events and gatherings. Overall, architectural tensile conical structures provide a modern, sophisticated look while offering practical benefits in terms of strength and space efficiency.



OUR PRODUCT

ENTRANCE GATE TENSILE CANOPY

An entrance gate tensile canopy is a striking architectural feature that combines functionality and aesthetics. Made from durable, tensioned fabric or membrane materials, this canopy provides stylish protection and shelter at entryways. Its flexible design allows for a variety of shapes and sizes, creating a welcoming and visually appealing entrance. The lightweight structure can span large distances without the need for bulky supports, ensuring unobstructed views and a modern look. Ideal for commercial, residential, and public spaces, an entrance gate tensile canopy enhances the first impression of any building while offering protection from the elements. Its ease of installation and maintenance, combined with its innovative design, makes it a popular choice for contemporary architecture.



OUR PRODUCT

PETROLPUMP TENSILE CANOPY

A Petrol Pump Tensile Canopy is a durable, weather-resistant structure designed to cover fuel stations. Made from high-strength tensile membranes, these canopies provide protection from sun and rain while enhancing the station's appearance. They offer large, unobstructed spans, creating a welcoming environment for customers. Quick to install and low maintenance, these canopies are an efficient and visually appealing solution for modern petrol stations.

In addition to their functional benefits, Petrol Pump Tensile Canopies are also energy-efficient. The materials used can reflect sunlight, reducing the need for artificial lighting during the day. They are also quick to install, low maintenance, and available in various designs and colors to match the branding of the petrol station.



OUR PRODUCT

AWNING

Awning tensile structures are advanced shading solutions designed to provide both functionality and aesthetic appeal. These structures utilize tensioned fabric materials stretched over a lightweight, yet sturdy frame, creating sleek and visually striking coverings. Ideal for various applications such as patios, walkways, storefronts, and outdoor seating areas, they effectively protect against sun, rain, and other environmental factors, enhancing the usability of outdoor spaces.

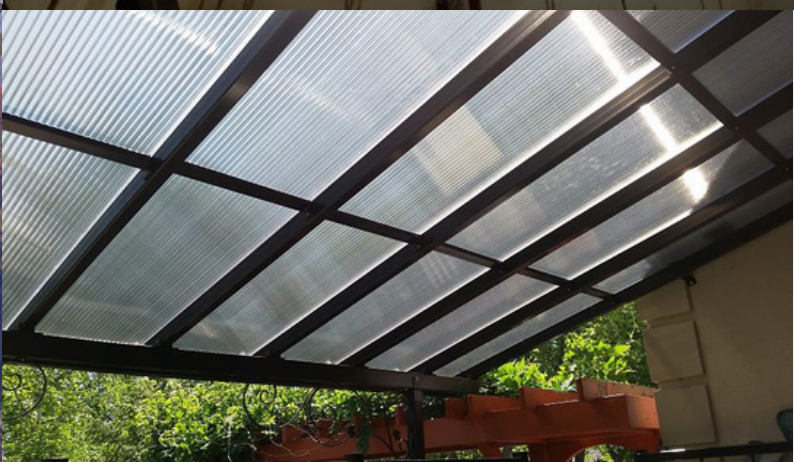
The fabrics used are durable, UV-resistant, and weatherproof, ensuring long-lasting performance with minimal maintenance. One of the key advantages of awning tensile structures is their quick and efficient installation. Thanks to the lightweight nature of the materials, these structures can be installed faster and with less labor compared to traditional awnings, reducing overall costs. With a wide range of customizable options, they can be tailored to fit any architectural style, making them a modern and stylish solution for adding both shade and shelter to any outdoor environment.



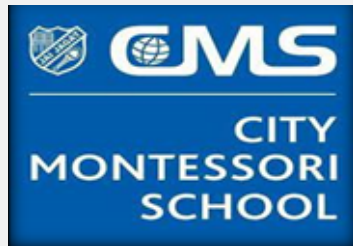
OUR PRODUCT

POLY CARBONATE SHEET

Polycarbonate sheets are durable, lightweight, and versatile materials made from thermoplastic polymers. Known for their exceptional impact resistance and high transparency, they are a popular alternative to glass. These sheets are shatterproof, provide UV protection, and can withstand extreme temperatures, making them suitable for skylights, greenhouses, roofing, and safety glazing. Easy to cut and install, they come in various thicknesses and colors, catering to different design needs. Their strength and durability ensure a long lifespan and low maintenance, offering a cost-effective solution for a range of applications in residential, commercial, and industrial settings.



OUR CLIENTS



.....AND MANY MORE.....