

ELEGANT TENSILE

"ELEGANCE IN EVERY CURVE, STRENGTH IN EVERY DESIGN"

HOTEL CATALOGUE

CONTACT US NOW

 **+91 8882088973 , +91 9315740299**

 **elegantensile@gmail.com**

 **[HTTPS://ELEGANTTENSILE.COM/](https://eleganttensile.com/)**

 **ELEGANT TENSILE**

 **ELEGANT TENSILE**

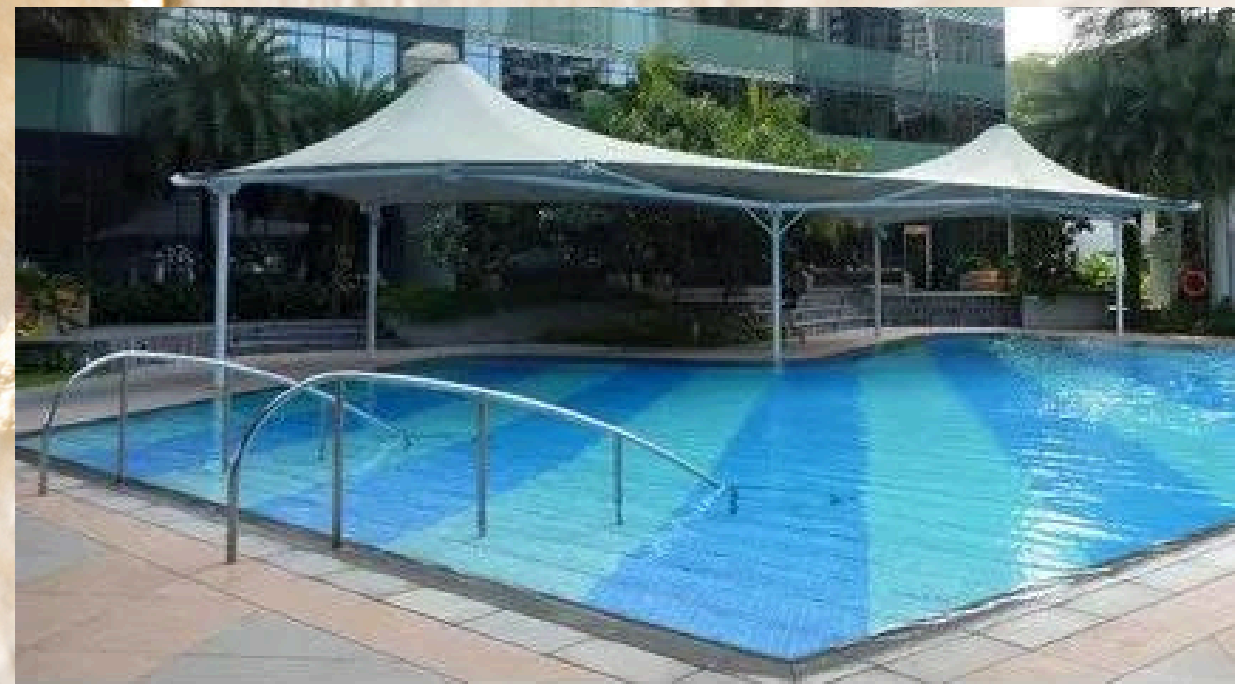
Key features

- **Water proof**
- **Fire proof**
- **Customizable designs**
- **Premium quality**
- **15 years warranty**
- **Specialized experts**
- **Affordable rate**
- **Lightweight Construction**
- **Low Maintenance**
- **Eco-Friendly Materials**
- **UV Protection**
- **Durability and Strength**
- **Aesthetic appeal**
- **Quick Installation**
- **Weather Protection**
- **Guest Engagement and Social Spaces**
- **Easy Integration with Lighting**
- **Enhanced Guest Comfort**
- **Enhanced Dinning Area**
- **Enhanced Gardens**

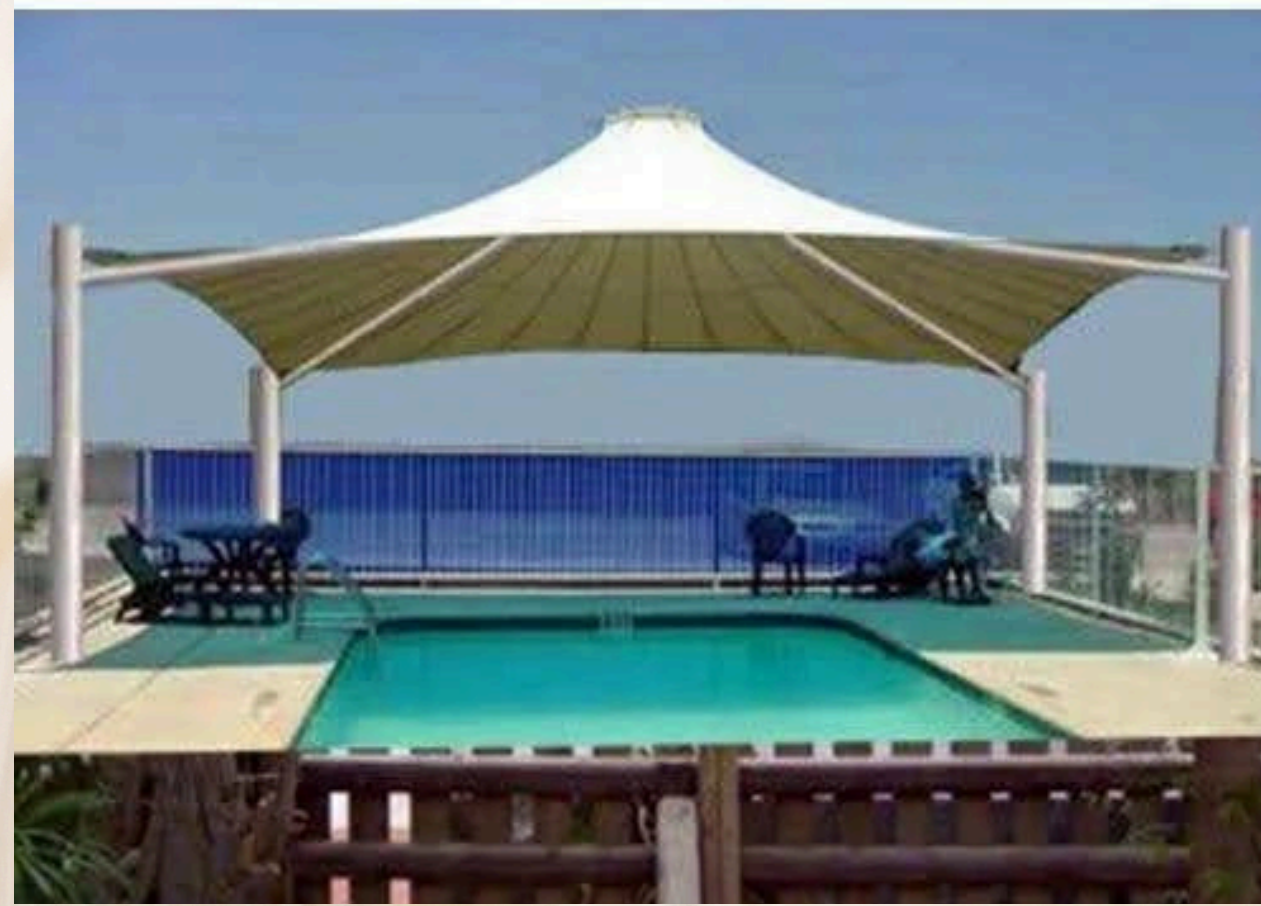
INVERTED UMBRELLA



SWIMMING POOL



SWIMMING POOL



ROOFING STRUCTURE



FACADE



UMBRELLA STRUCTURE



CAR PARKING



ENTRANCE STRUCTURE



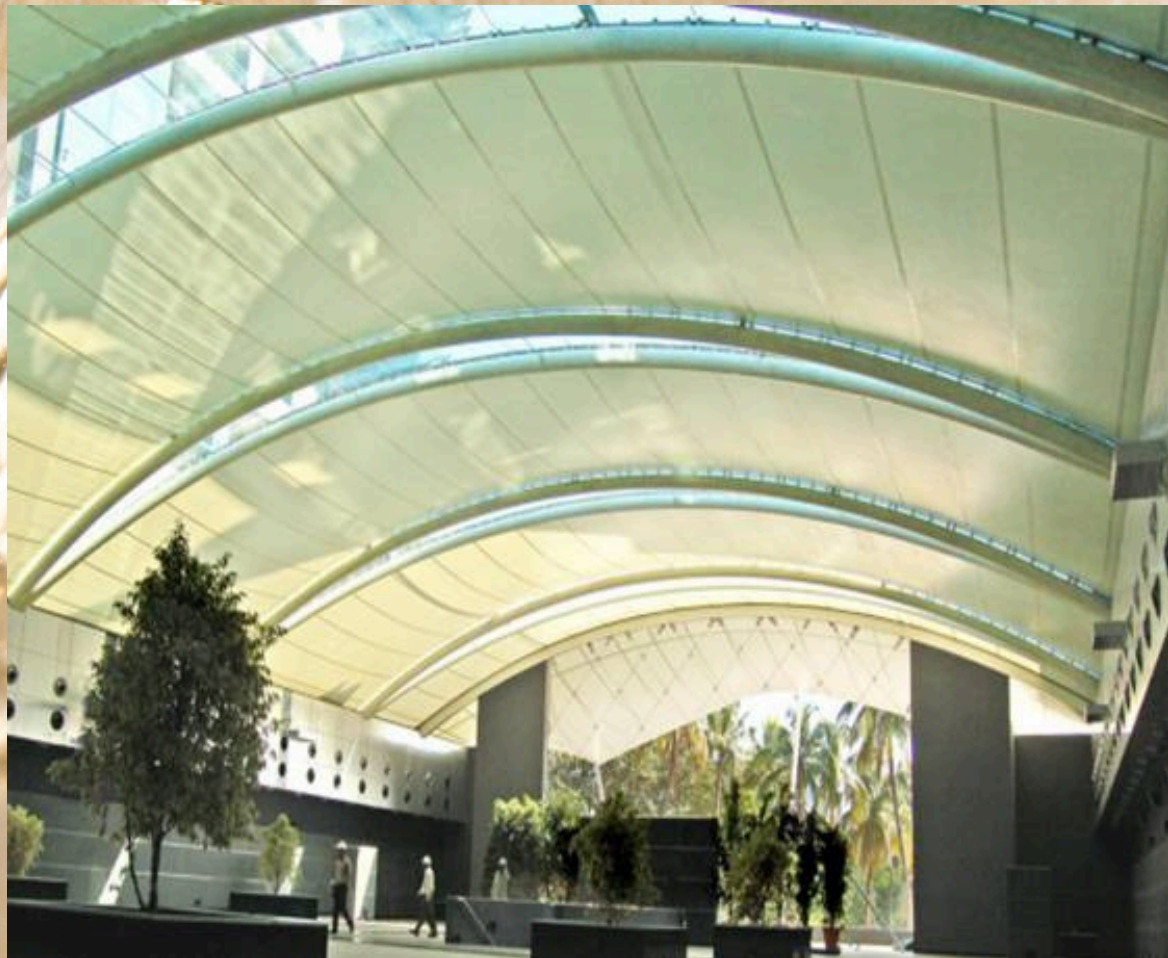
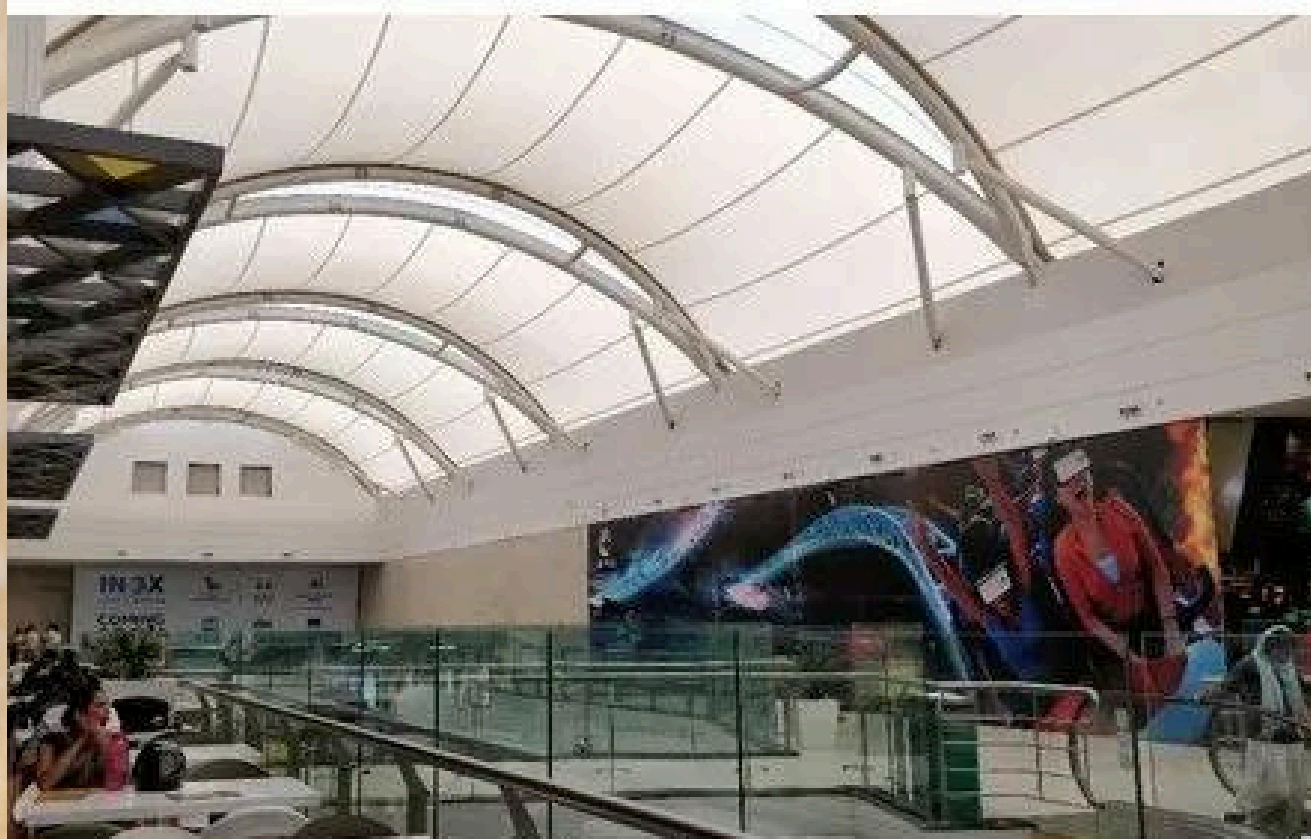
RESTAURANT STRUCTURE



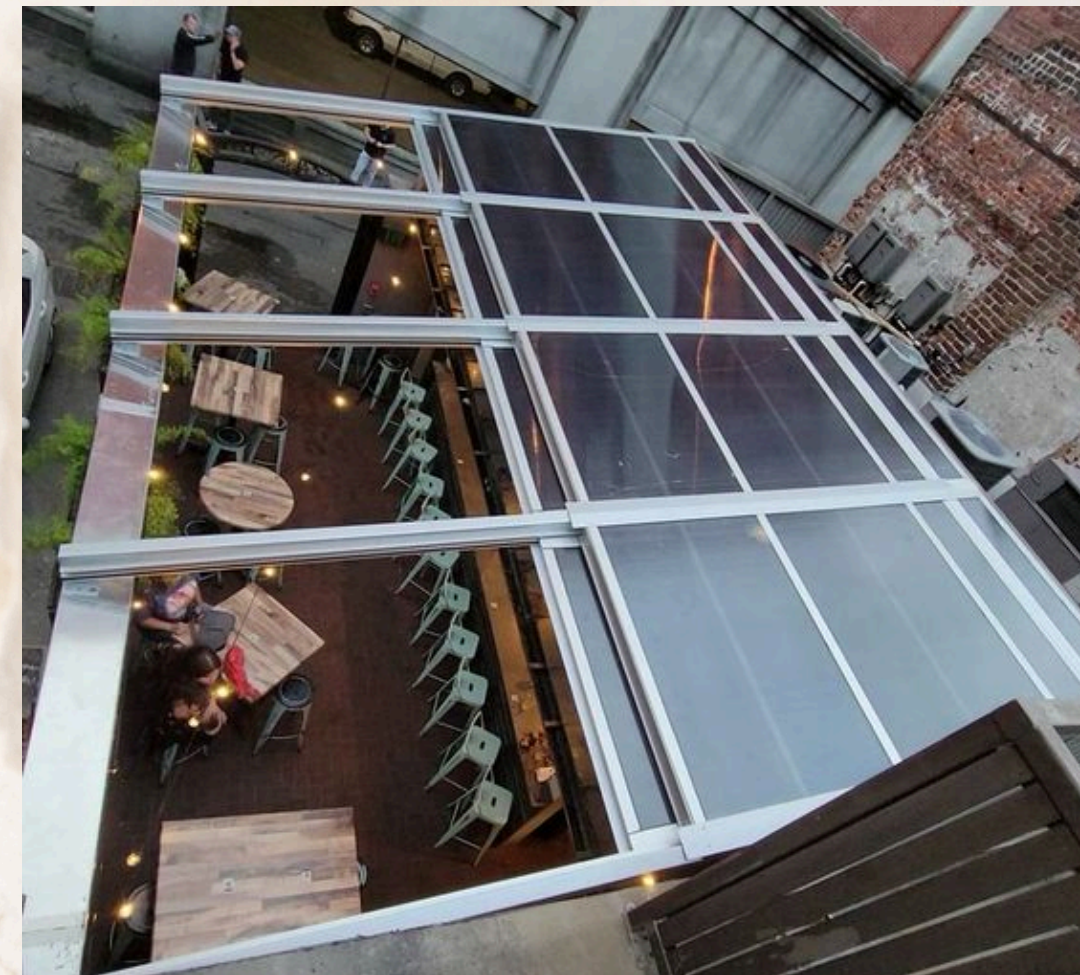
WALKWAY



SKYWAY



RETRACTABLE ROOF



GAZEBO



MORE STRUCTURES



MORE STRUCTURES





ELEGANT TENSILE | Elegance in Every Curve,
Strength In Every Design